

City Council Work Session Handouts

October 10, 2016

- I. Review and Discuss Zoning File 16-21
- II. Review and Discuss Zoning File 16-22
- III. Review and Discuss Variance 16-05
- IV. Review and Discuss an Update on the 2016 Corporate Challenge Program
- V. Review and Discuss Fall 2016 Neighborhood Leadership Workshop

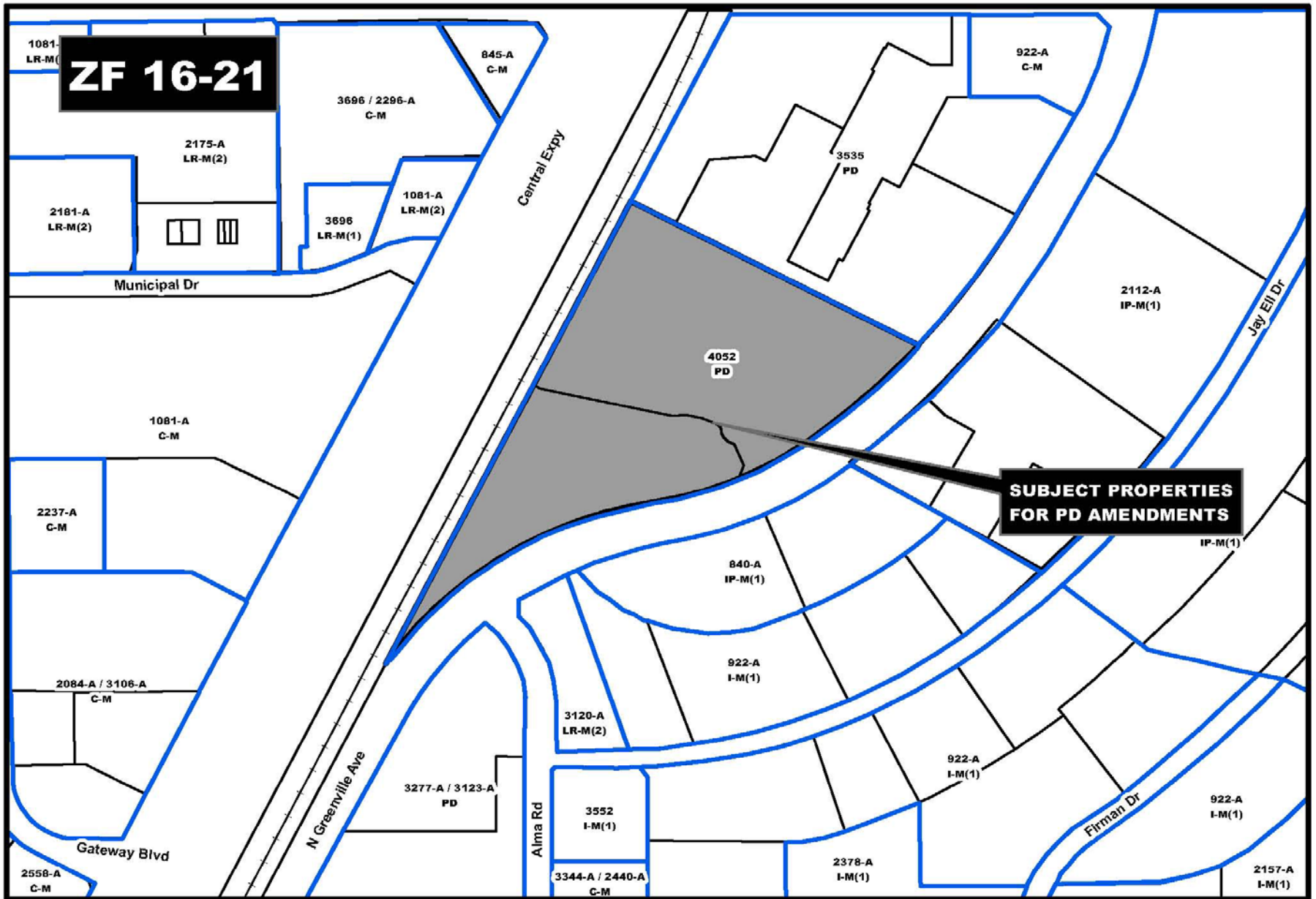


Agenda Item 5

Zoning File 16-21
Planned Development
(Eastside Phase Two)

City of Richardson
Development Services





ZF 16-21 Zoning Map

Updated By: shacklett, Update Date: August 23, 2016
 File: D:\Mapping\Cases\Z\2016\ZF1621\ZF1621 zoning.mxd

This product is for informational purposes and may not have been prepared for or be suitable for legal, engineering, or surveying purposes. It does not represent an on-the-ground survey and represents only the approximate relative location of property boundaries.



ZF 16-21

Central Expy

Municipal Dr

Jay Ell Dr

**SUBJECT PROPERTIES
FOR PD AMENDMENTS**

Gateway Blvd

N Greenville Ave

Alma Rd

Firman Dr





Alma Rd

US-75

Campbell Rd

DART Light Rail

Subject Property

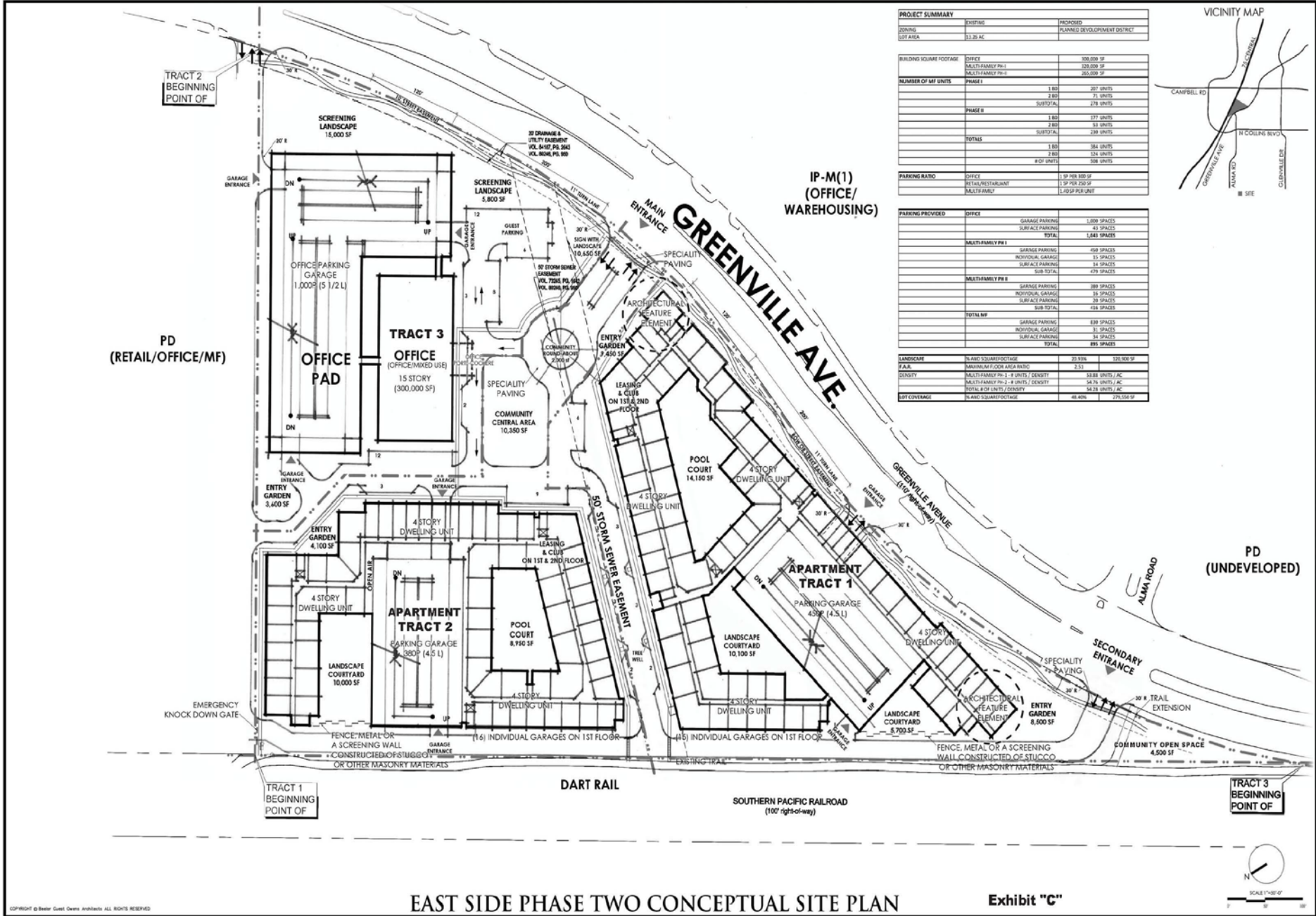
Eastside Phase 1

Greenville Ave

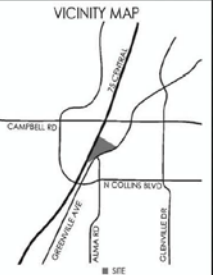
Oblique Aerial
Looking West



Development Services



PROJECT SUMMARY		
ZONING	EXISTING	PROPOSED
LOT AREA	33.20 AC	PLANNED DEVELOPMENT DISTRICT
BUILDING SQUARE FOOTAGE		
	OFFICE	506,000 SF
	MULTI-FAMILY PH-I	320,000 SF
	MULTI-FAMILY PH-II	253,000 SF
NUMBER OF MF UNITS		
	PHASE I	1,800
	2,800	71 UNITS
	SUBTOTAL	2,781 UNITS
	PHASE II	1,800
	2,800	53 UNITS
	SUBTOTAL	238 UNITS
	TOTALS	1,800
	2,800	384 UNITS
	#OF UNITS	324 UNITS
	#OF UNITS	508 UNITS
PARKING RATIO		
	OFFICE	1 SP PER 100 SF
	RETAIL/RESTAURANT	1 SP PER 250 SF
	MULTI-FAMILY	1.45 SP PER UNIT
PARKING PROVIDED		
	OFFICE	
	GARAGE PARKING	1,000 SPACES
	SURFACE PARKING	40 SPACES
	TOTAL	1,040 SPACES
	MULTI-FAMILY PH-I	
	GARAGE PARKING	408 SPACES
	INDIVIDUAL GARAGE	31 SPACES
	SURFACE PARKING	14 SPACES
	SUB-TOTAL	453 SPACES
	MULTI-FAMILY PH-II	
	GARAGE PARKING	389 SPACES
	INDIVIDUAL GARAGE	38 SPACES
	SURFACE PARKING	20 SPACES
	SUB-TOTAL	447 SPACES
	TOTAL MF	
	GARAGE PARKING	630 SPACES
	INDIVIDUAL GARAGE	31 SPACES
	SURFACE PARKING	34 SPACES
	TOTAL	695 SPACES
LANDSCAPE		
	PLANT SQUARE FOOTAGE	23,936
	120,000 SF	
	F.A.S.	2.33
	MINIMUM FLOOR AREA RATIO	
	DENSITY	
	MULTI-FAMILY PH-I - 4 UNITS / DENSITY	14.88 UNITS / AC
	MULTI-FAMILY PH-II - 4 UNITS / DENSITY	14.78 UNITS / AC
	TOTAL # OF UNITS / DENSITY	14.28 UNITS / AC
LOT COVERAGE		
	PLANT SQUARE FOOTAGE	48.40%
	279,306 SF	



EAST SIDE PHASE TWO CONCEPTUAL SITE PLAN

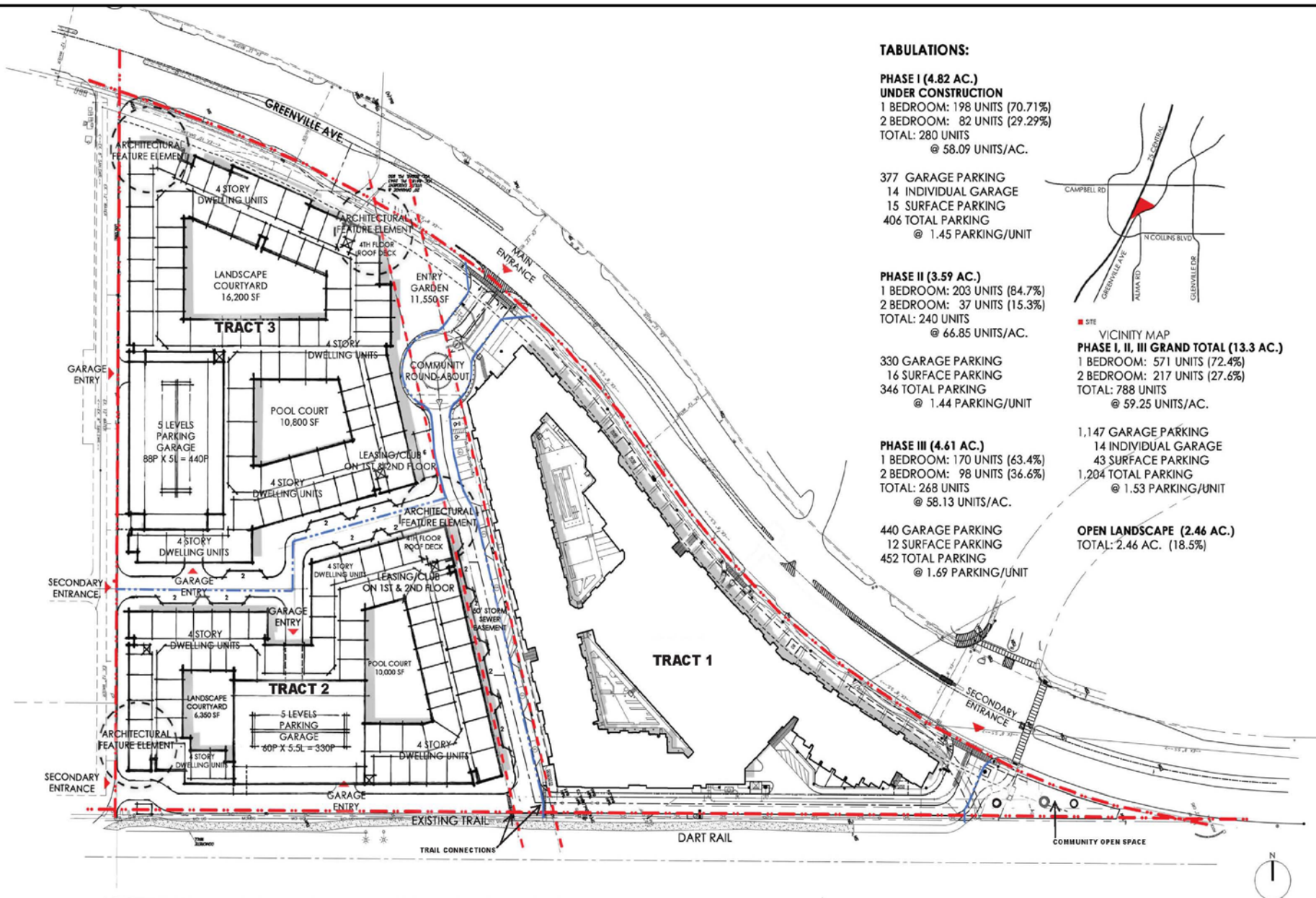
Exhibit "C"

RICHARDSON, TEXAS

Exhibit "C" (original)

© COPYRIGHT © Beiler Guest Owen Architects. ALL RIGHTS RESERVED.





TABLATIONS:

**PHASE I (4.82 AC.)
UNDER CONSTRUCTION**
 1 BEDROOM: 198 UNITS (70.71%)
 2 BEDROOM: 82 UNITS (29.29%)
 TOTAL: 280 UNITS
 @ 58.09 UNITS/AC.

377 GARAGE PARKING
 14 INDIVIDUAL GARAGE
 15 SURFACE PARKING
 406 TOTAL PARKING
 @ 1.45 PARKING/UNIT

PHASE II (3.59 AC.)
 1 BEDROOM: 203 UNITS (84.7%)
 2 BEDROOM: 37 UNITS (15.3%)
 TOTAL: 240 UNITS
 @ 66.85 UNITS/AC.

330 GARAGE PARKING
 16 SURFACE PARKING
 346 TOTAL PARKING
 @ 1.44 PARKING/UNIT

PHASE III (4.61 AC.)
 1 BEDROOM: 170 UNITS (63.4%)
 2 BEDROOM: 98 UNITS (36.6%)
 TOTAL: 268 UNITS
 @ 58.13 UNITS/AC.

440 GARAGE PARKING
 12 SURFACE PARKING
 452 TOTAL PARKING
 @ 1.69 PARKING/UNIT



VICINITY MAP
PHASE I, II, III GRAND TOTAL (13.3 AC.)
 1 BEDROOM: 571 UNITS (72.4%)
 2 BEDROOM: 217 UNITS (27.6%)
 TOTAL: 788 UNITS
 @ 59.25 UNITS/AC.

1,147 GARAGE PARKING
 14 INDIVIDUAL GARAGE
 43 SURFACE PARKING
 1,204 TOTAL PARKING
 @ 1.53 PARKING/UNIT

OPEN LANDSCAPE (2.46 AC.)
 TOTAL: 2.46 AC. (18.5%)

EASTSIDE II PHASE TWO AND THREE CONCEPTUAL SITE PLAN

Exhibit "C-1"

RICHARDSON, TEXAS

COPYRIGHT © 890 Architects ALL RIGHTS RESERVED



Exhibit "C-1" Alternate

16137
09.01.2016
HUNT

Proposed PD Development Standards

- **USES**

- Retail/Commercial/Office (Exhibit “C”)
- Apartments (Exhibits “C” and “C-1”)

- **DENSITY**

- Retail – 6,000 sq. ft. (Exhibit “C”)
- Office – 300,000 sq. ft. (Exhibit “C”)
- Apartments – 558 units (Exhibit “C”)
- Apartments – 800 units (Exhibit “C-1”)

- **PARKING**

- Retail – 1/250 sq. ft. (Exhibit “C”)
- Office – 1/300 sq. ft. (Exhibit “C”)
- Apartments – 1.30/unit
(Exhibits “C” and “C-1”)

- **SETBACKS** (Exhibits “C” and “C-1”)

- Front – 25 feet (Greenville Ave)
- Side – 15 feet (North property line)
- Rear – 25 feet (West property line)

- **EXTERIOR FAÇADE MATERIAL**

- 85% Masonry – Non-Residential
(Exhibit “C”)
- 50% Masonry – Apartments
(Exhibits “C” and “C-1”)
- Compatible material

- **MAX. BLDG. HEIGHTS**

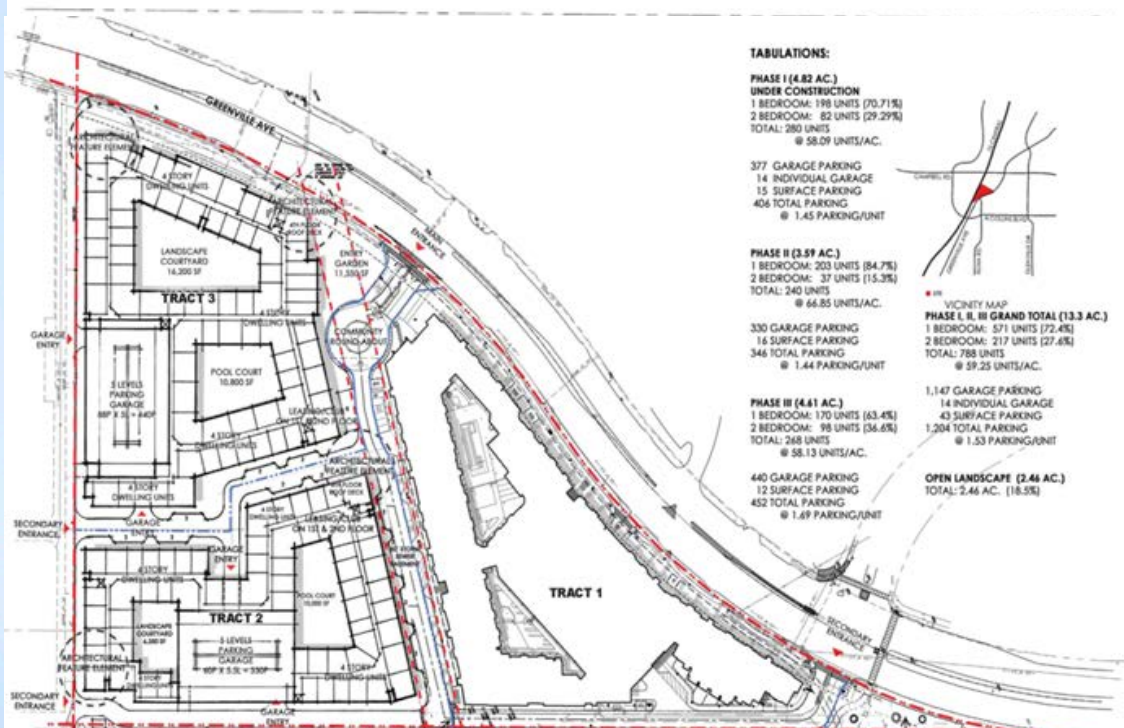
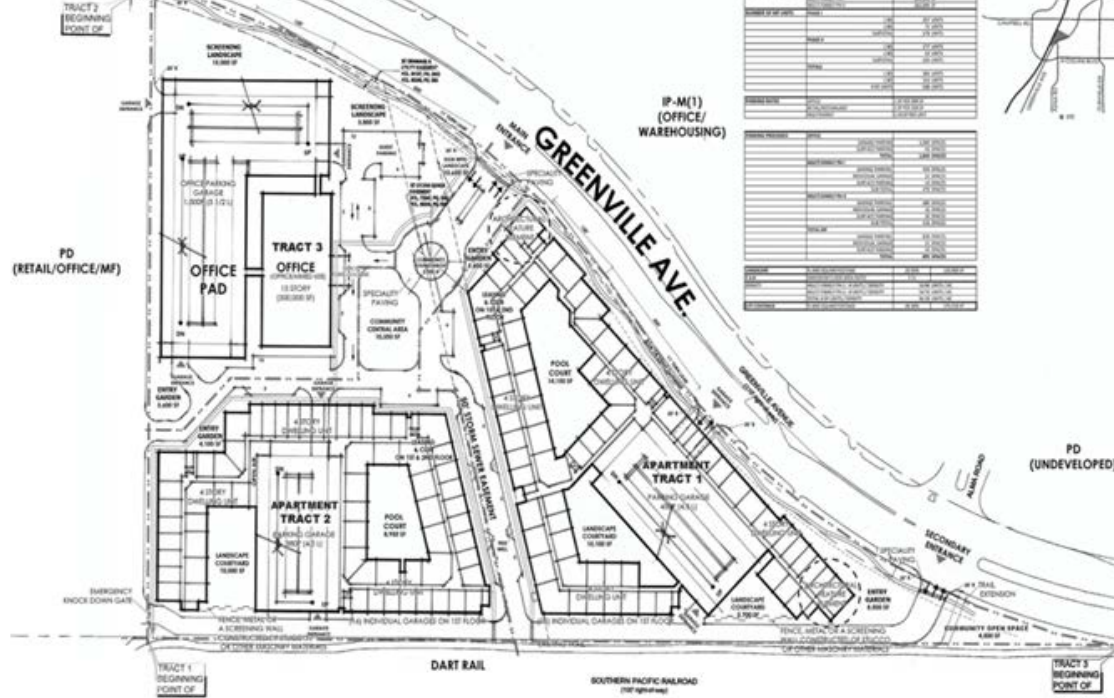
- Office/Hotel – 250 Feet (Exhibit “C”)
- Retail – 35 feet (Exhibit “C”)
- Apartments – 80 Feet
(Exhibits “C” and “C-1”)



EXHIBIT "D"
ARCHITECTURAL IMAGES



EAST SIDE PHASE TWO ELEVATION SAMPLES
RICHARDSON, TEXAS



Development Services

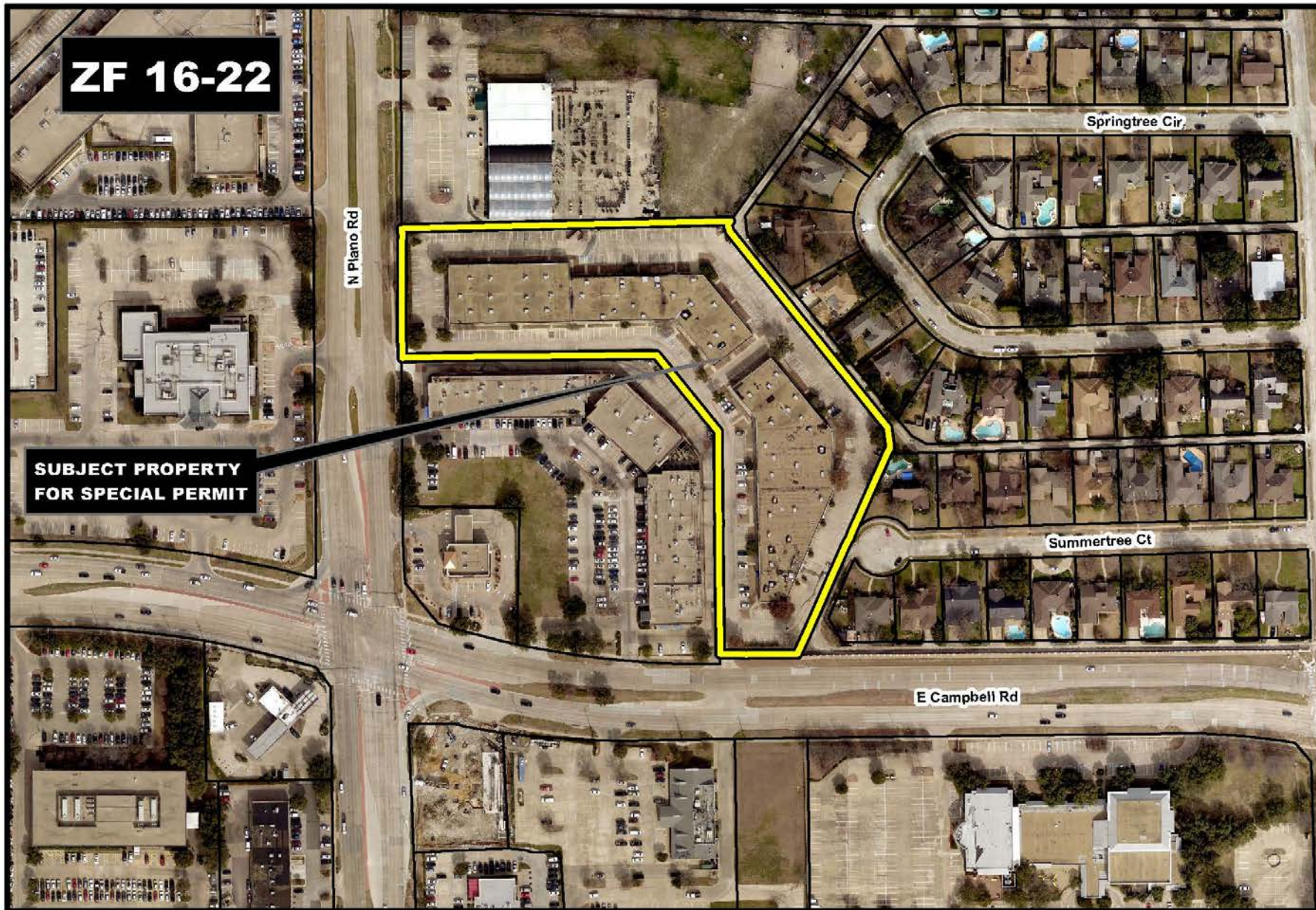


Agenda Item 6

Zoning File 16-22
Special Permit
(Massage Establishment)

City of Richardson
Development Services





ZF 16-22

**SUBJECT PROPERTY
FOR SPECIAL PERMIT**

N Plano Rd

Springtree Cir

Summertree Ct

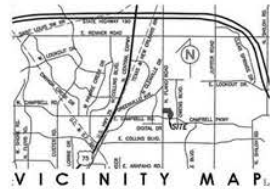
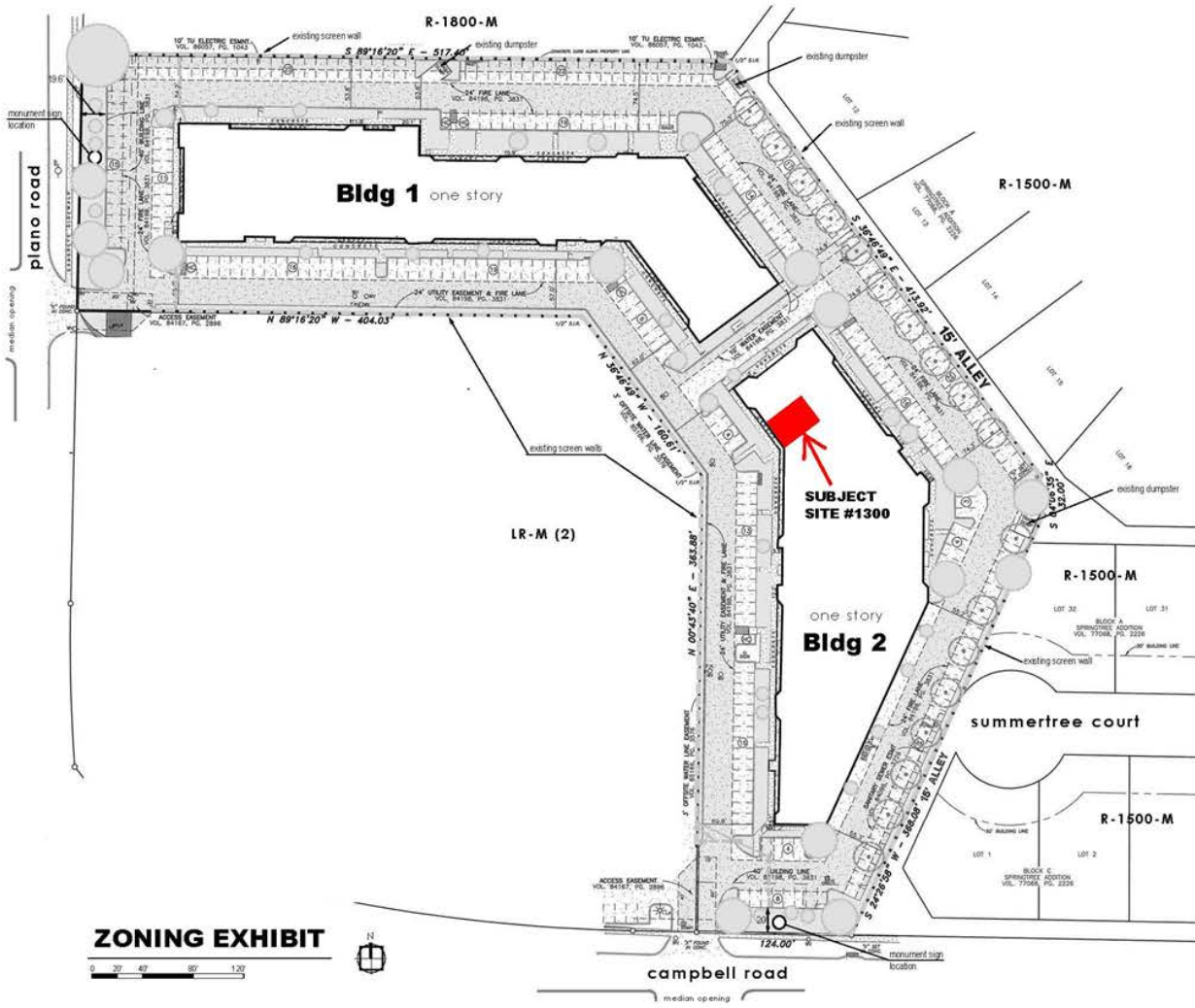
E Campbell Rd

ZF 16-22 Aerial Map

Updated By: shacklett, Update Date: September 8, 2016
File: DSI\Mapping\Cases\Z\2016\ZF1622\ZF1622_ortho.mxd

This product is for informational purposes and may not have been prepared for or be suitable for legal, engineering, or surveying purposes. It does not represent an on-the-ground survey and represents only the approximate relative location of property boundaries.





SITE DATA

Existing Zoning: LR-M(2)
 Proposed Zoning: LR-M(2) with Special Permit
 Proposed Use: Massage Establishment

Lot Area: 5.31 acres / 231,304 s.f.
 Building Area: Building 1 - 37,626 s.f.
 Building 2 - 34,303 s.f.
 Total - 71,929 s.f.

Allowed FAR: 0.5:1
 Existing FAR: 0.31:1

Parking Required: 283
 parking Provided: 299

Landscape Required: 7%
 Landscape Provided: 12.4%

ZONING EXHIBIT

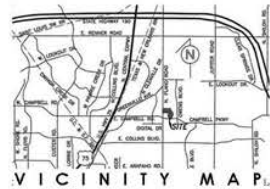
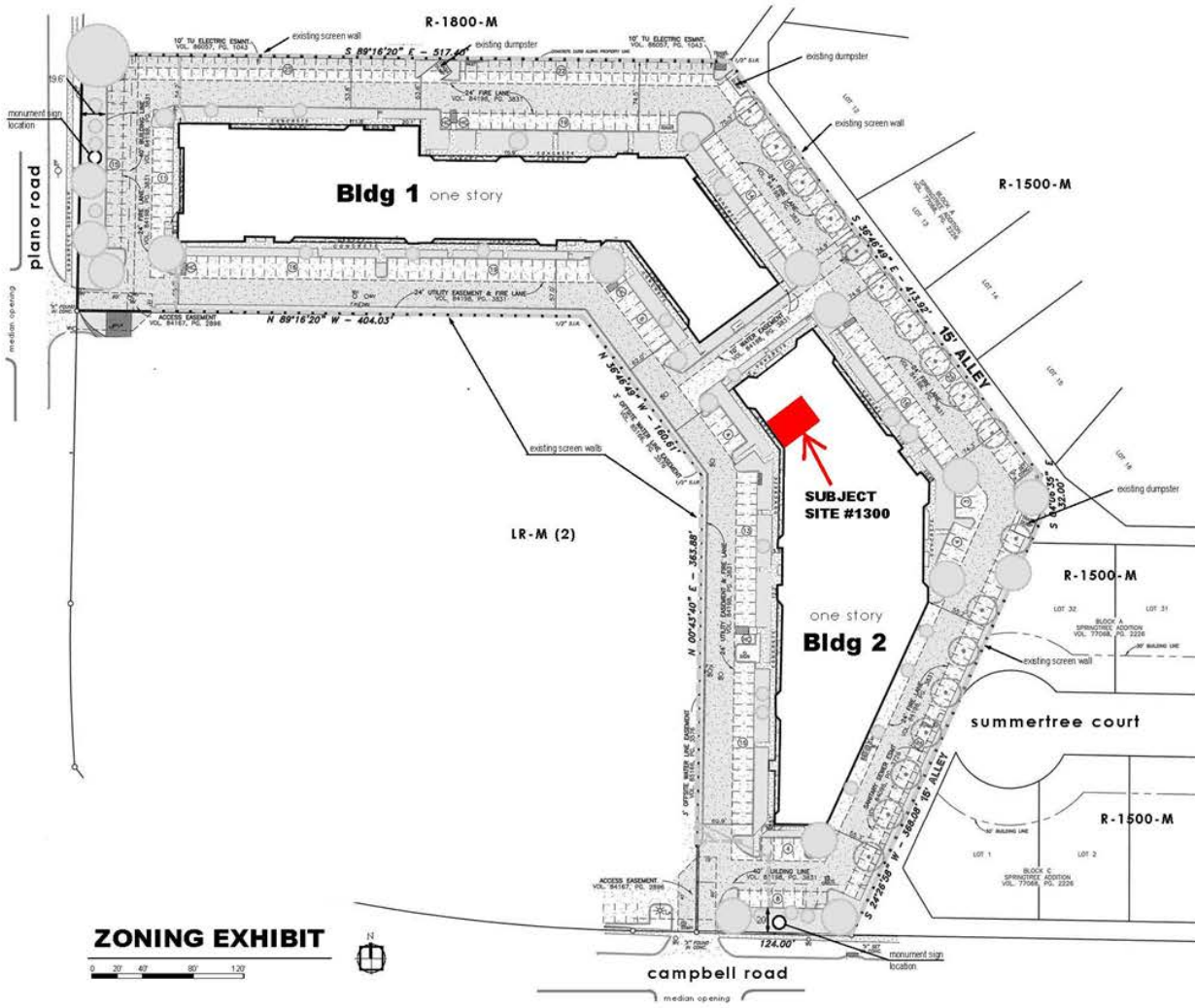


Exhibit "B"





Looking North across
Campbell Road



SITE DATA

Existing Zoning: LR-M(2)
 Proposed Zoning: LR-M(2) with Special Permit
 Proposed Use: Massage Establishment

Lot Area: 5.31 acres / 231,304 s.f.
 Building Area: Building 1 - 37,626 s.f.
 Building 2 - 34,303 s.f.
 Total - 71,929 s.f.

Allowed FAR: 0.5:1
 Existing FAR: 0.31:1

Parking Required: 283
 parking Provided: 299

Landscape Required: 7%
 Landscape Provided: 12.4%

ZONING EXHIBIT



Exhibit "B"





Agenda Item 7

Variance 16-05

Side Lot Lines

(1016 & 1018 N. Lindale Lane)

City of Richardson
Development Services





Rockingham Ln

W Arapaho Rd

Proposed Lot Lines

Subject Properties

Kirby Ln

N Lindale Ln

Hampshire Ln

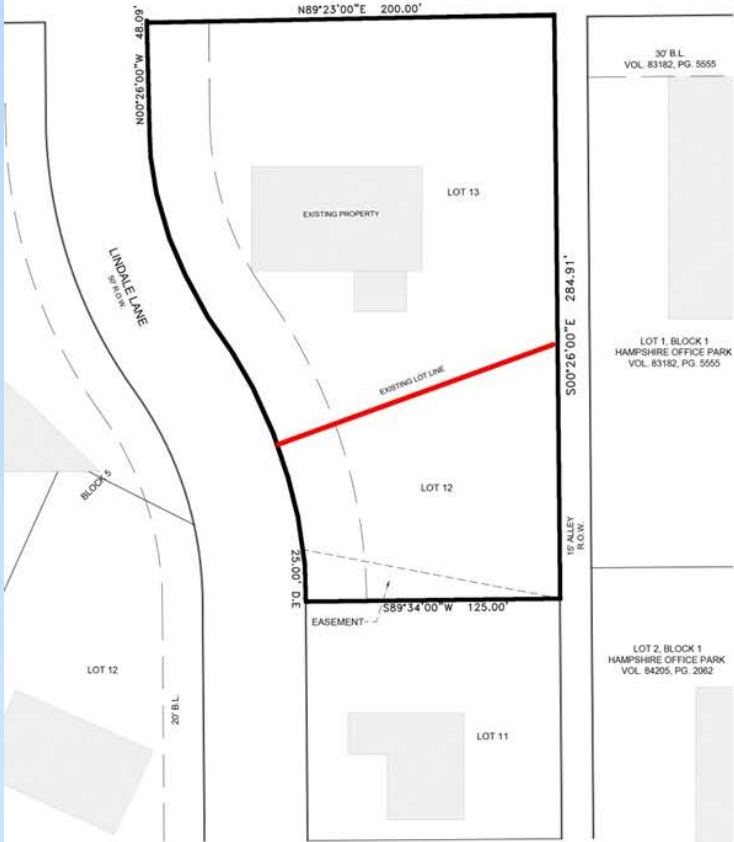


Development Services

LOT 14, BLOCK 1
THE WELLINGTON AT ARAPAHO
VOL. 2000146, PG. 5001

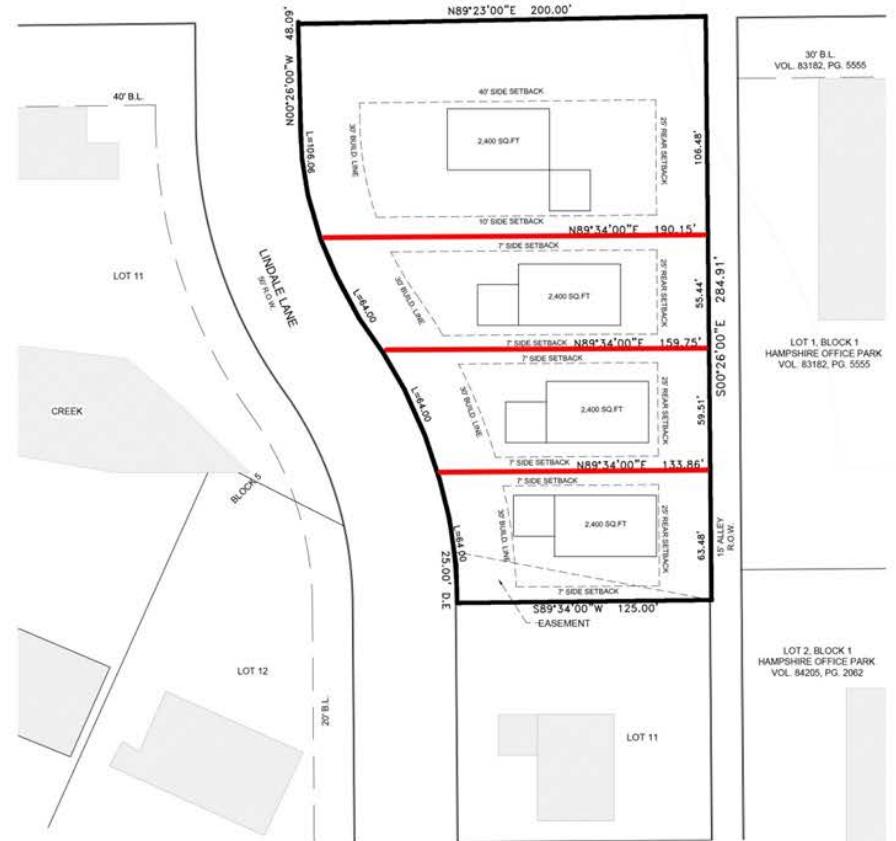
15' ALLEY
R.O.W.

ARAPAHO ROAD
CALLED 100' R.O.W.



EXISTING SITE PLAN
SCALE: 1/32" = 1'-0"

ARAPAHO ROAD
CALLED 100' R.O.W.



PROPOSED SITE PLAN
SCALE: 1/32" = 1'-0"





2016

CORPORATE CHALLENGE

CITY OF RICHARDSON

Sponsored by



**BlueCross BlueShield
of Texas**

An Independent Licensee of the Blue Cross and Blue Shield Association



Current Participation

57 Companies In 2016

The image displays a collection of 57 company logos arranged around the central logo for Special Olympics Texas. The central logo features a stylized figure with arms raised, surrounded by a laurel wreath. The logos include:

- Anritsu
- PEPSICO
- KOSMOS ENERGY
- Companion DATA SERVICES
- UT DALLAS
- FM Global
- BECK
- HILTON WORLDWIDE
- FOSSIL GROUP
- ARMOR
- NERIUM INTERNATIONAL
- SENDERO
- CHILDRESS ENGINEERING SERVICES
- Raytheon
- trintech
- OXY
- The Heart Hospital Baylor Plano
- tsp
- Hewlett Packard Enterprise
- CREDIT UNION OF TEXAS
- iqor
- AVIALL A BOEING COMPANY
- GEICO
- Associated AirCenter
- NTTA NORTH TEXAS TOLLWAY AUTHORITY
- AmersourceBergen Specialty Group
- StateFarm
- markit
- slalom
- CISCO
- PIONEER NATURAL RESOURCES
- CommScope
- TEXAS INSTRUMENTS
- qorvo
- ASC AIR SYSTEM COMPONENTS INC.
- Methodist HOSPITAL FOR SURGERY
- LENNOX INTERNATIONAL
- KPMG
- CPSG PARTNERS
- TEXAS CAPITAL BANK
- L3 Mission Integration
- OUTMATCH
- ISN
- ServiceKing COLLISION REPAIR CENTERS
- REGUS
- SOUTHWEST.COM
- TRANSAMERICA TRANSFORM TOMORROW
- Mustang Technology
- BlueCross BlueShield of Texas
- VCE
- OSTEOMED Redefining Possibilities, Reshaping Lives
- ca technologies
- ETC
- QUICK



Teams

- New participants in 2016
 - TSP
 - Methodist Hospital for Surgery
 - Texas Instruments
 - Credit Union of Texas
 - Geico
 - OsteoMed
 - Childress Engineering Services
 - Sendero
 - L-3 Mission Integration
 - State Farm





54 Teams, 57 Companies, 6 Divisions

Division A

Texas Instruments - NEW

BlueCross BlueShield of Texas

L-3 Mission Integration - NEW

HP

Geico - NEW

PepsiCo

Raytheon

State Farm - NEW

Southwest Airlines

Division AA

Cisco Systems

City of Richardson

KPMG

Fossil

Lennox International

Transamerica

Richardson ISD

Qorvo (Formerly TriQuint)

Pioneer

Division B

AmerisourceBergen
Specialty Group

CA

Aviall

ISN

North Texas Tollway Authority

Beck

Texas Capital Bank

UT Dallas

Markit



Teams - Continued

Division BB	Division C	Division D
Associated Air Center	TSP - NEW	L-3 Mustang Technology
VCE	Kosmos Energy	Sendero - NEW
Service King	Companion Data Services	FM Global
Hilton	Methodist Hospital for Surgery - NEW	CPSG
Credit Union of Texas - NEW	Regus	Armor
Nerium	Air System Components	Outmatch
THE HEART HOSPITAL Baylor Plano	A-Team	Trintech
Occidental Chemical Corp	Slalom Consulting	Childress Engineering - NEW
IQOR	ETC	OsteoMed - NEW



Sponsors and Partners

- Blue Cross Blue Shield – Title Sponsorship (Final Year)
- United Airlines – Raffle Sponsor
- Hilton Hotels - Raffle Sponsor
- Methodist Richardson Medical Center– Event and Water Sponsor
- In-N-Out Burger – Opening Ceremonies Partner
- Baylor Health Care – 100+ hours of athletic trainers
- University of Texas at Dallas – 25+ hours of field and facility usage



Opening Ceremony

August 12th (Canceled due to inclement weather)



- Great Walk
- Lighting of the Cauldron
- Special Olympian Parade

- Spirit Awards
- Great Food, Music & Games



Challenge Highlights

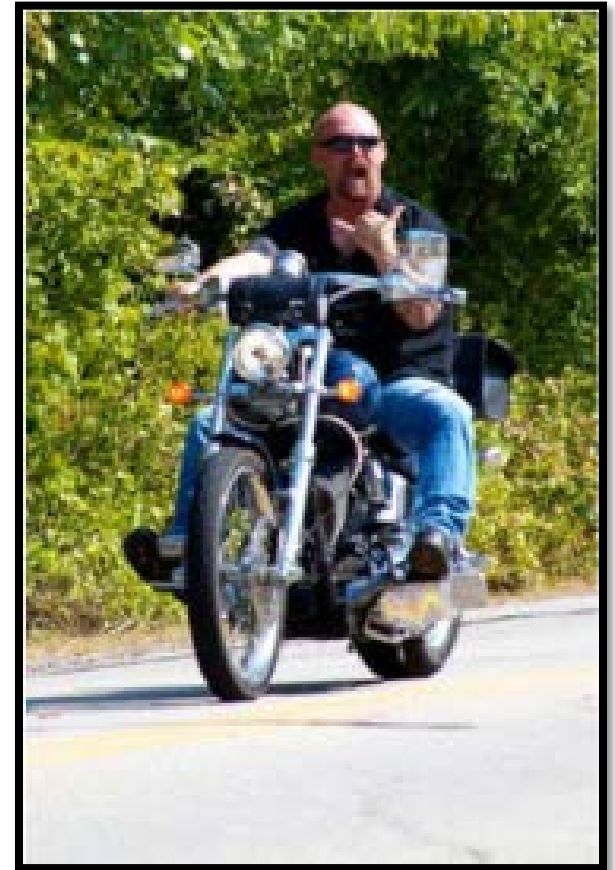
- Corporate Challenge was full for the 3rd year in a row (54 teams)
- Over 4000 runners registered for the 5k run (largest ever)
- In N' Out Burger is the "Official Hamburger" of the Corporate Challenge for the 3rd year in a row
- 2 new events introduced in 2016:
 - Cornhole
 - Duathlon





The Corporate Challenge Great Ride

September 3rd





Challenge Venues

- The Billiard Den
- Rack Daddy's Billiard Hall
- Adventure Landing
- Huffhines Softball Complex/
Tennis Center
- Rockwall Natatorium
- AMF Richardson
- Richardson ISD Athletic Fields
- Richardson Civic Center
- Sherrill Park Golf Course
- The Sportsplex At Valleyview
- University Of Texas At Dallas
- Galatyn Plaza





Events

Aug. 12 - Oct. 13th

- Dominoes/42
- 5K Run
- Badminton
- Basketball
- Billiards
- Bowling
- Darts
- Duathlon
- Golf
- Dodgeball
- Soccer
- Swimming
- Softball
- Horseshoes
- Mini Golf
- Punt/Pass/Kick
- Kickball
- Table Tennis
- Volleyball
- Cornhole
- Texas Hold 'Em
- Tennis
- The Great Ride





Closing Ceremony

October 13th

- Awards/Trophy presentation
- Check presentation to SOTX
- Music by the Texas Instrument Jazz Band

Entertainment provided by:





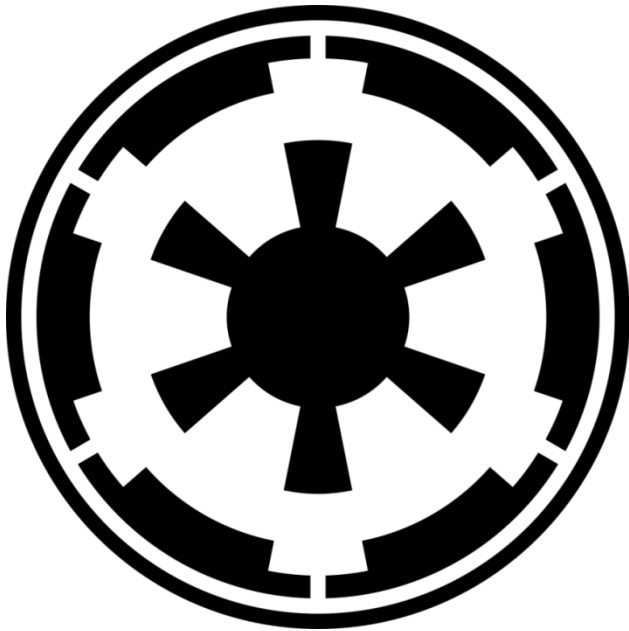
Special Olympics of Texas



- Since the Corporate Challenge began 19 years ago, \$1.8 Million has been given to Special Olympics Texas by corporate challenge employees and corporation contributions.
 - In 2015, \$240,000 contributed
 - 25% goes to local organizations thru an application process.
 - As part of participating, companies are asked to raise a minimum of \$1,000
 - City employees raised over \$17,000 in 2015



City of Richardson Troopers



CORPORATE CHALLENGE
EPISODE XIX
THE CITY STRIKES BACK





Corporate Recreation

- Point of emphasis in 2016
 - Diversifying offerings to incorporate new participants
 - Off the Beaten Path 5k at Breckenridge Park
 - Attracted over 135 runners in its first year
 - Family Night at the Ball Park
 - November 12th
 - Family friendly night at Keffler Ball Park featuring a movie, dinner and camping in the outfield
- In 2016 event offerings included:
 - Group Outings
 - Dallas Stars
 - Texas Rangers
 - Frisco Roughriders
 - Ice Skating at the Richardson Dr. Pepper Stars Center
 - Softball and Basketball Leagues



Corporate Recreation





Goals for 2017

- Poll participants to gauge interest in existing events and the possibility of changing/adding new events
- Develop a 3rd signature Corporate Rec Event
- Determine feasibility of adding additional teams





2016 Fall Neighborhood Leadership Workshop

City Council Briefing
October 10, 2016



Purpose

- Give an overview of next week's Neighborhood Leadership Workshop



Goals of Leadership Training

- **Identify and motivate** emerging community leaders
- **Familiarize** leaders with local history and current community dynamics
- **Help** leaders develop personal and organizational skills that can be used to better the community
- **Assist** leaders in identifying and addressing community needs and opportunities



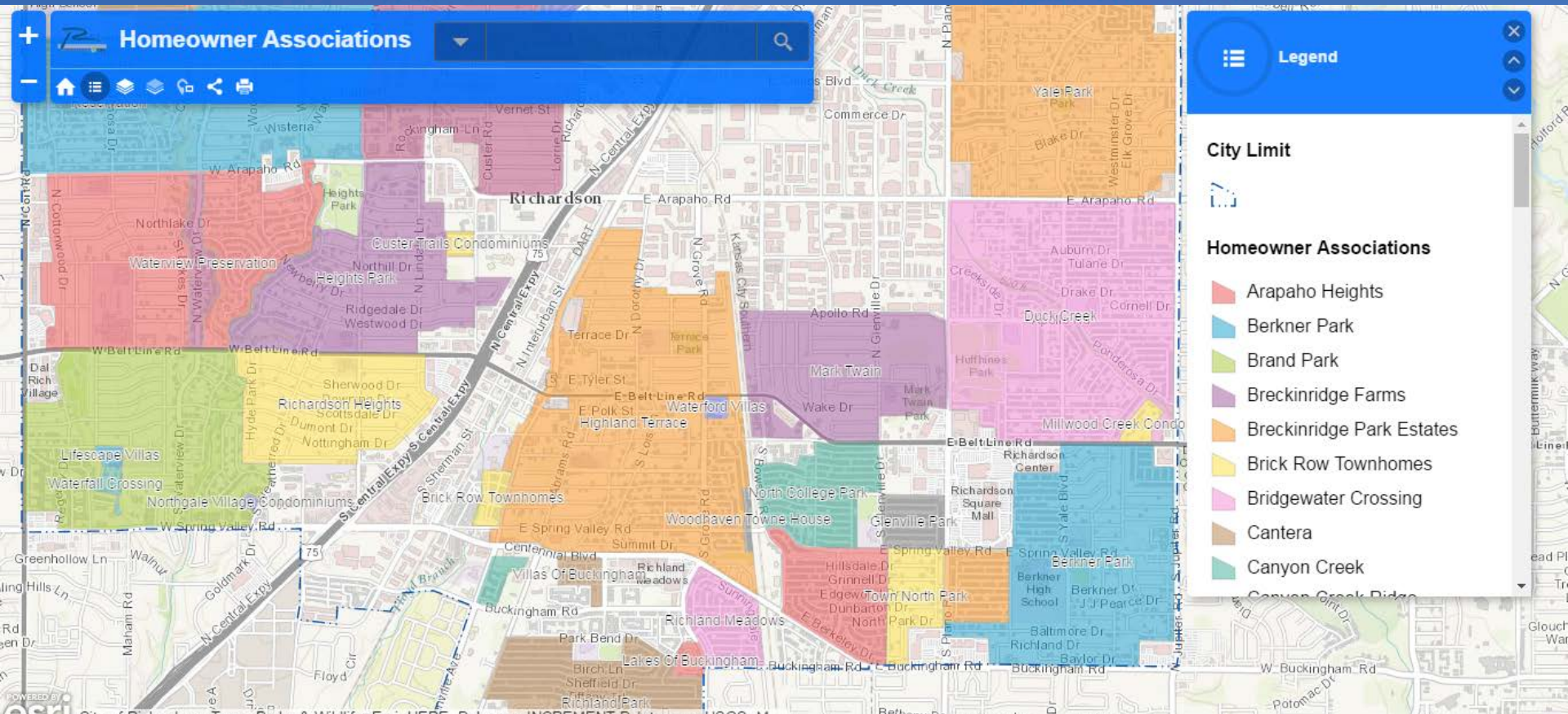
Types of Leadership Training

- Service on City Boards and Commissions
- Community Leadership Programs
- Volunteer Opportunities
- Membership in Civic & Social Organizations
- **Homeowner / Neighborhood Associations**



Homeowner / Neighborhood Associations

- Online Map
- Over 70 associations



How Attendees Benefit

- Develop a better **appreciation for neighborhood issues** in general
- Develop a better understanding of **city operations and programs**
- Develop a better understanding of neighborhood association **management techniques and best practices**
- Benefit from **networking opportunities** and new relationships



Workshops

- 25 workshops held in previous 12 years
- Held every Spring and Fall in the evening
 - In place of morning City Council / Presidents Meeting
- Over 1,500 participants
- Representatives from 55 different neighborhoods
- More than 42 different programs offered



Previous Workshop Sessions

- City of Richardson
 - Development
 - Redevelopment
 - Water Conservation
 - Water Quality
 - Group Homes
 - Code Enforcement
 - Emergency Preparedness
 - MyRichardson App
 - Video Crime Watch
 - Social Media & Communication
 - Arts Initiatives
 - *Richardson Today*



Exhibitors Row

- Tables staffed by city departments and community partners
- New tables highlighting Environmental and Multiculturalism Partnership Initiatives



2016 Fall Leadership Workshop

- Tuesday, October 18, 2016
- Grand Hall, Civic Center
- Schedule
 - 5:30 PM Exhibitors Row, Dinner, Networking
 - 6:30 PM Welcome & Introductions
 - 6:45 PM Environmental Partnerships Initiative
 - 7:00 PM Parks and Recreation Update
 - 7:20 PM Real Richardson Presentation
 - 7:40 PM Commercial and Retail Development Update
 - 8:00 PM Q & A
 - 8:15 PM Adjourn



