

City Council Meeting Handouts

March 25, 2024

- I. Standards of Care for Early Childhood Development and Youth Programs
- II. Variance 24-01

Standards of Care: Richardson Day Camp & Early Childhood Development Programs

March 25, 2024

OVERVIEW

THIS PRESENTATION WILL DISCUSS THE FOLLOWING TOPICS:

- CITY COUNCIL STRATEGIC GOAL
- PURPOSE
- COR STANDARDS OF CARE
- COR DAY CAMP PROGRAMS
- EARLY CHILDHOOD DEVELOPMENT PROGRAMS
- STATE DAY CARE REGULATIONS
- TO MAINTAIN EXEMPTION STATUS

CITY COUNCIL STRATEGIC GOAL

Improve access, usability, and user experience with policies, processes, and procedures.

PURPOSE

In order to maintain exemption status from the Texas Department of Family and Protective Services (DFPS), the Governing body of the municipality must annually adopt standards of care by ordinance after a public hearing.

COR STANDARDS OF CARE

The Standards of Care outlines two programs:

- Day Camp Standards of Care for all summer day camp programs
- Early Child Development Program Standards of Care for all year round/ongoing programs



COR DAY CAMP

Day Camp Program exists as four different camps:

- Kinder Camp (ages 5-6)*
- Playground Camp (ages 7-11)
- Elementary Camp (ages 7-11)*
- Teen Camp (ages 12-15)*

*These Camps are hosted at Apollo Jr High campus.



KINDER CAMP

- Ages: 5-6
- Days: Monday - Friday
- Time: 7:30a.m. - 6:00p.m.
- Location: Apollo Junior High
- Enrollment: 22 Campers/week
- Daily Activities: Group games, science projects, arts & crafts, music & movement, and swimming
- Special activities: 2 pool visits per week, occasional special guests



PLAYGROUND CAMP

- Ages: 7-11
- Days: Monday - Friday
- Time: 7:30a.m. - 6:00p.m.
- Location: Heights Park & Recreation Center
- Enrollment: 60 campers/week
- Daily Activities: Indoor and outdoor games/sports, playground time, arts & crafts, board games, and swimming
- Special Activities: 1 field trip/special guest & 3 pool visits per week



ELEMENTARY CAMP

- Ages: 7-11
- Days: Monday - Friday
- Time: 7:30a.m. - 6p.m.
- Location: Apollo Junior High
- Enrollment: 60 campers/week
- Daily Activities: Gym games, arts & crafts, sports, board games, playground time, and swimming
- Special Activities: 2 field trips/special guests & 2 pool visits per week



TEEN CAMP

- Ages: 12-15
- Days: Monday - Friday
- Time: 7:30a.m.-6:00p.m.
- Location: Apollo Junior High
- Enrollment: 35 campers/week
- Daily Activities: Travel around DFW, gym games, board games, and swimming
- Special Activities: 3 field trips/special guests & 2 pool visits per week



SUMMER CAMP 2023

- Kinder Camp – 175 registrations
- Playground Camp – 468 registrations
- Elementary Camp – 538 registrations
- Total registrations – 1456
- 23 Seasonal staff members
- Registration opens April 1st



EARLY CHILDHOOD DEVELOPMENT PROGRAM

- Ages 3-5
- Located at Huffhines Recreation Center
- Rotating topics and themes
- Various days/times offered
- Varying from a 1.5 hour to a 3-hour offering per day
- Follow RISD Holiday Schedule - Offerings are modified through the summer months



STATE DAY CARE REGULATIONS

In the State of Texas, no person may operate a child-care facility or child-placing agency without one of the following:

- A license issued by the Department of Family and Protective Services (DFPS)
- A certificate to operate under accreditation issued by the DFPS
- Exemption outlined in Section 42.041 (b)(14)



TO MAINTAIN EXEMPTION STATUS:

An elementary age recreation program operated by a municipality is exempt provided that the following criteria are met:

- Complete Governmental Entity Request for Exemption form
 - Per written confirmation from DFPS - if there are no changes to the program this form does not require annual submission
- Governing body of the municipality annually adopts standards of care by ordinance after a public hearing.
- Ordinance includes at a minimum: staffing ratios; staff qualifications; facility health and safety standards; and mechanisms for monitoring and enforcing the adopted local standards.
- Standards of care are provided to the parents of each program participant.
- Parents must be informed that the program is not licensed.
- Program is not advertised as a child-care facility.

IN SUMMARY

After the public hearings during tonight's City Council meeting, City staff requests the adoption of the Standards of Care outlined in the Texas Administrative Code as a city ordinance



VARIANCE 24-01

PARKING VARIANCE – RICHLAND VILLAGE

1300 E. BELT LINE ROAD

March 25, 2024

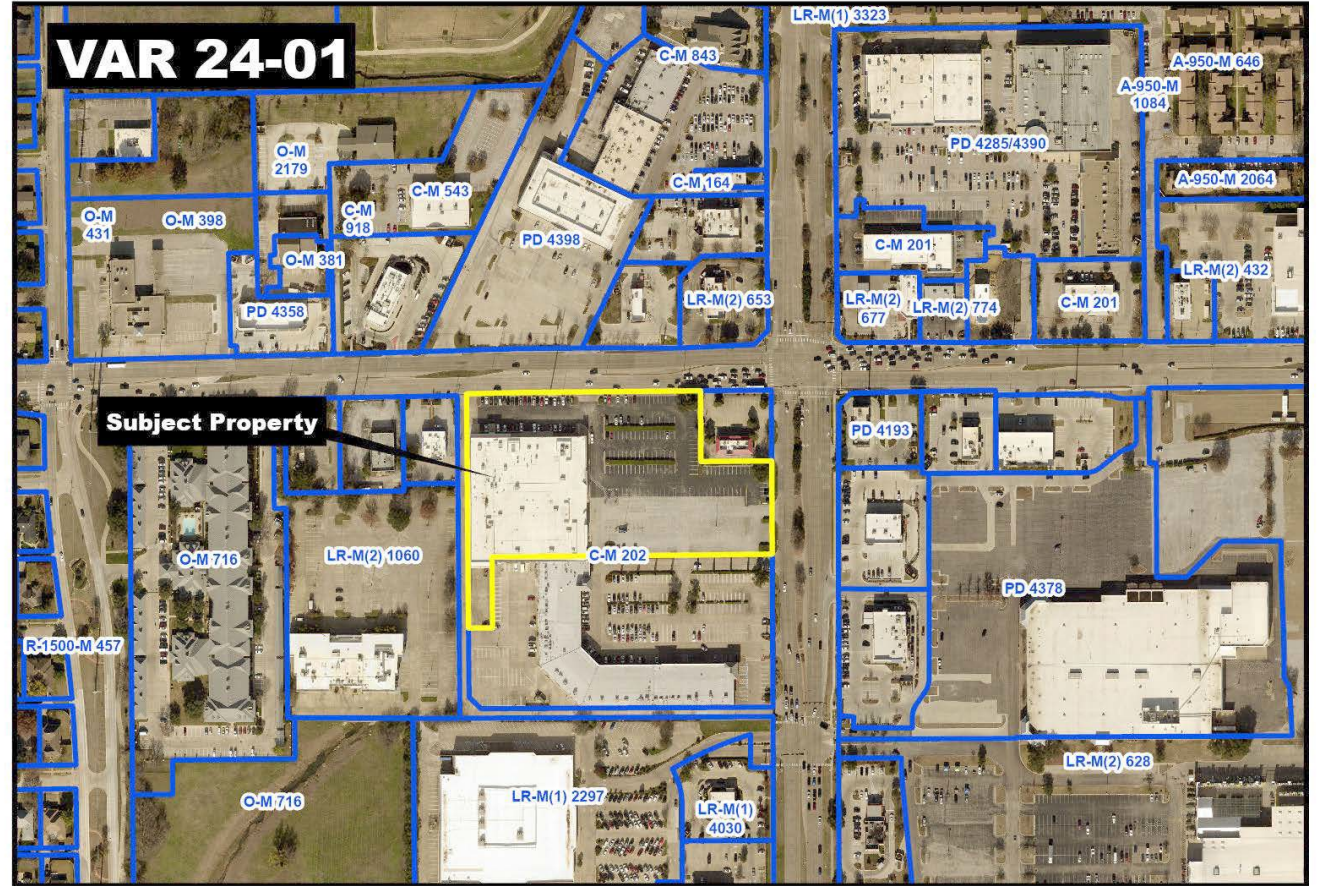
1300 E. BELT LINE ROAD

Location:

- Southwest of the intersection of E. Belt Line Road and S. Plano Road

Current Zoning:

- C-M Commercial
- Special Permits for Motor Vehicle Parts and Accessory Sales and a Barber School
- Parking variances for reduced parking for Planet Fitness and Pet Supplies and Grooming



VAR 24-01 Aerial & Zoning Map
Variance Request
1300 E. Belt Line Road

This product is for informational purposes and may not have been prepared for or be suitable for legal, engineering, or surveying purposes. It does not represent an on-the-ground survey and represents only the approximate relative location of property boundaries.

VARIANCE REQUEST

Required Parking:

- 337 parking spaces required for existing uses and proposed additional retail lease space
- 306 parking spaces provided on site
 - 31 parking space deficiency
 - Previous variance requests applied to specific users

Request:

- Approval of a 31-parking space reduction to accommodate any retail use for 11,647 sq. ft. of vacant lease space

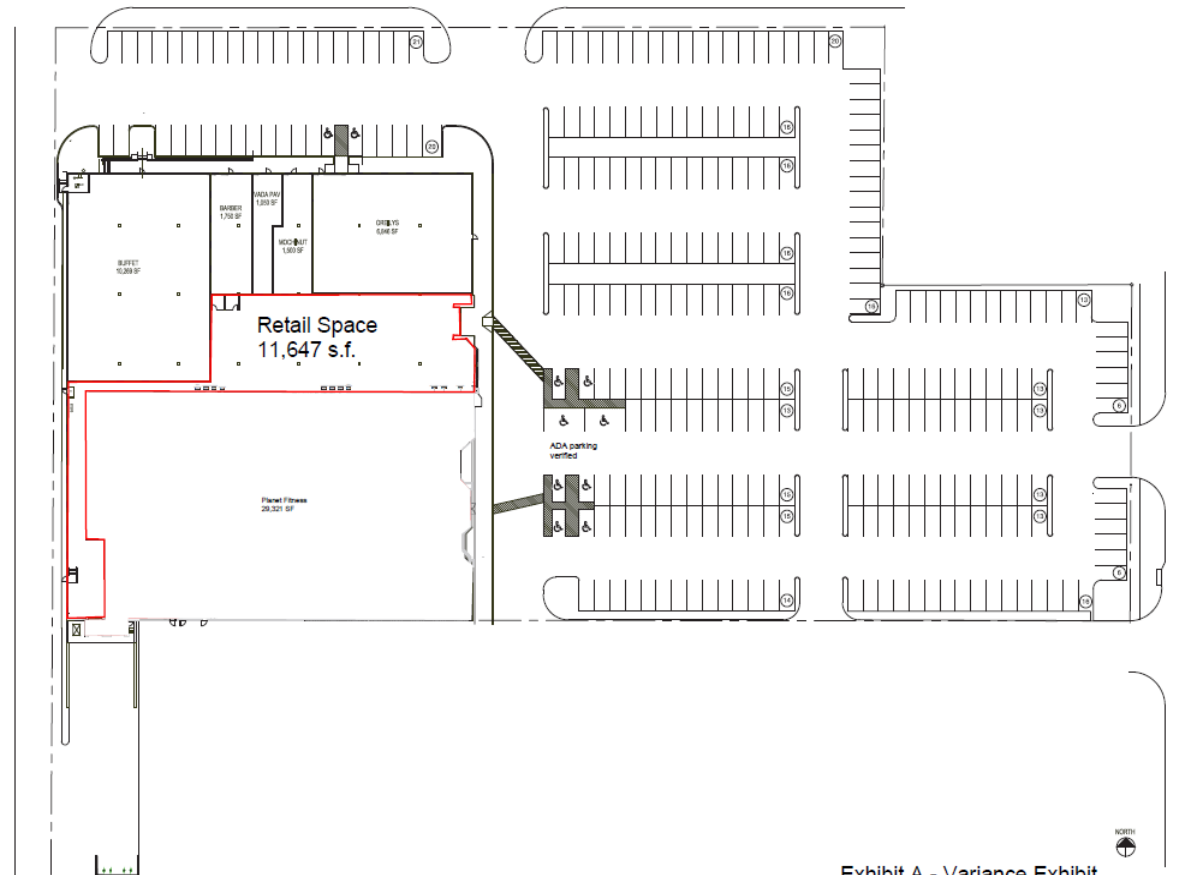


Exhibit A - Variance Exhibit

PARKING ANALYSIS

On-Site Peak Parking Counts

- Monday-Wednesday and Friday at 6:30 PM
- Maximum occupied parking spaces – 134 spaces (172 spaces unoccupied)

Off-Site Peak Parking Counts (16,657 s.f. - Grocer)

- Maximum occupied parking spaces of higher intense retail use - 46 spaces

Conclusion

- Based on recorded occupied parking spaces for the shopping center and grocer, 126 spaces remain available
- Staff observed similar findings

ITEMS TO CONSIDER

City Plan Commission (CPC) Action

- CPC voted 5-0 to recommend APPROVAL of the request as presented

City Council Action

- City Council may approve the request as presented, approve with conditions or amended conditions, or deny the request