

NEIGHBORHOOD VITALITY PROGRAM

CITY COUNCIL BRIEFING: OCTOBER 10, 2011

2010 NEIGHBORHOOD VITALITY PROGRAM

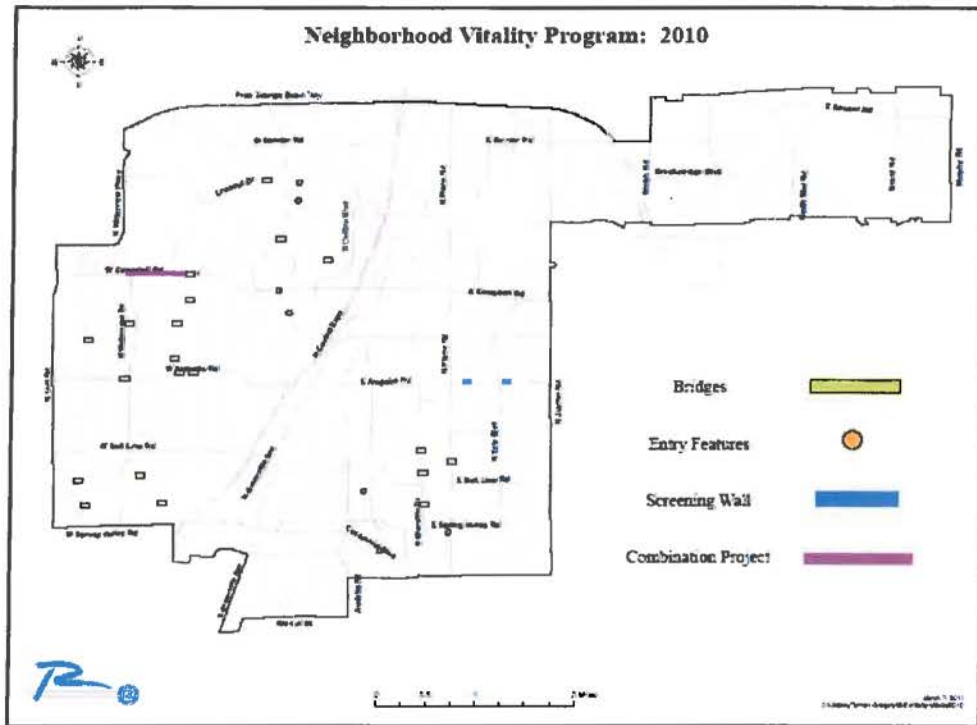
- The 2010 Bond Program allocated \$2,000,000 for Neighborhood Vitality Program projects
- In addition, \$1,000,000 of savings and interest earnings from the 2006 Neighborhood Vitality Program was made available
- Project selection was based on a Calls for Projects in the Fall of 2010 in which 25 neighborhoods submitted more than \$10.7 million in requests
- On January 24, 2011, City Council passed Resolution 11-01 finalizing the project selection process

2010 NEIGHBORHOOD VITALITY PROGRAM

- The City Council approved Funding Strategy included:
 - Funding for all requested bridges, except for bridges that would modify a previous enhancement
 - Funding for all requested leave-out walls (Greenwood Hills – Campbell Road and Yale Park – Arapaho Road)
 - Funding projects with the most visibility in those neighborhood that have never received previous funding

2010 PARTICIPANTS

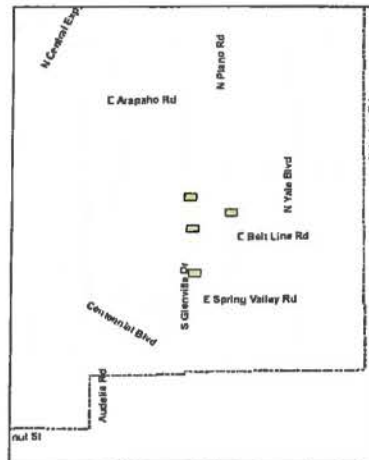
- Arapaho
- Canyon Creek
- Canyon Creek Condo's
- College Park
- Cottonwood Heights
- Duck Creek
- Estates of Prairie Creek
- Greenwood Hills
- Mark Twain
- North College Park
- Pinery
- Reservation
- Town North Park
- Woodhaven Townhouse
- Yale Park



1ST ROUND OF PROJECTS

BRIDGE ENHANCEMENT PROJECTS

- Mark Twain
 - Glenville @ Shady Glen / Wake
 - Glenville @ Southwestern / Pacific
- Duck Creek
 - Plano @ Huffhines Creek
- North College Park
 - Glenville @ Windsong



Conceptual Options - Imagery

July 2011



Proposed Condition - Westward View



Existing Condition - Westward View



Representative Images

NOTE: ALL PRELIMINARY ROUTES AND DIMENSIONS ARE APPROXIMATE SUBJECT TO REFINEMENT WITH FURTHER PROJECT DEVELOPMENT



Glenville Drive (Between Shady Glen and Wake Drive) - Option 2 Plan


Neighborhood Vitality Enhancements

Duck Creek, Mark Twain, N. College Park - Richardson, Texas




David T. Retzsch
design, LLC


Conceptual Options - Imagery
 July 2011



Proposed Condition - Eastward View




Existing Condition - Eastward View



Representative Images

NOTE: ALL PRELIMINARY LAYOUTS AND DIMENSIONS ARE APPROXIMATE SUBJECT TO REFINEMENT WITH FURTHER PROJECT DEVELOPMENT



Glenville Drive (Between Southwestern and Pacific Drive) - Option 2 Plan

Neighborhood Vitality Enhancements
 Duck Creek, Mark Twain, N. College Park - Richardson, Texas

David T. Retzsch design, LLC

Conceptual Options - Imagery
 August 2011



Proposed Condition - Eastward View



Existing Condition - Eastward View



Representative Images

NOTE: ALL PRELIMINARY LAYOUTS AND DIMENSIONS ARE APPROXIMATE SUBJECT TO REFINEMENT WITH FURTHER PROJECT DEVELOPMENT



Glenville Trail Bridge - Option 1.5 Plan

Neighborhood Vitality Enhancements
 Duck Creek, Mark Twain, N. College Park - Richardson, Texas

David T. Retzsch design, LLC

Conceptual Options - Imagery
 August 2011

Proposed Condition - Eastward View

Existing Condition - Eastward View

Representative Images

NOTE: ALL PRELIMINARY LAYOUTS AND DIMENSIONS ARE APPROXIMATE SUBJECT TO REFINEMENT WITH FURTHER PROJECT DEVELOPMENT

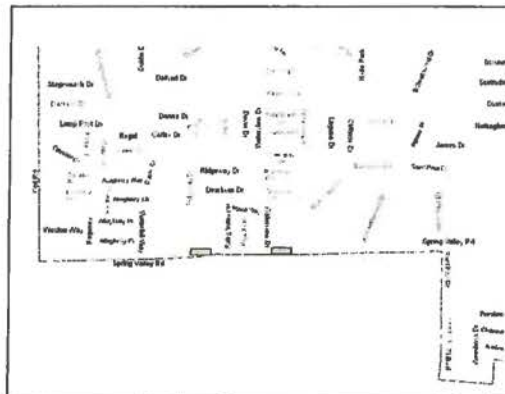
Plano Road over Huffhines Creek - Option 1 Plan

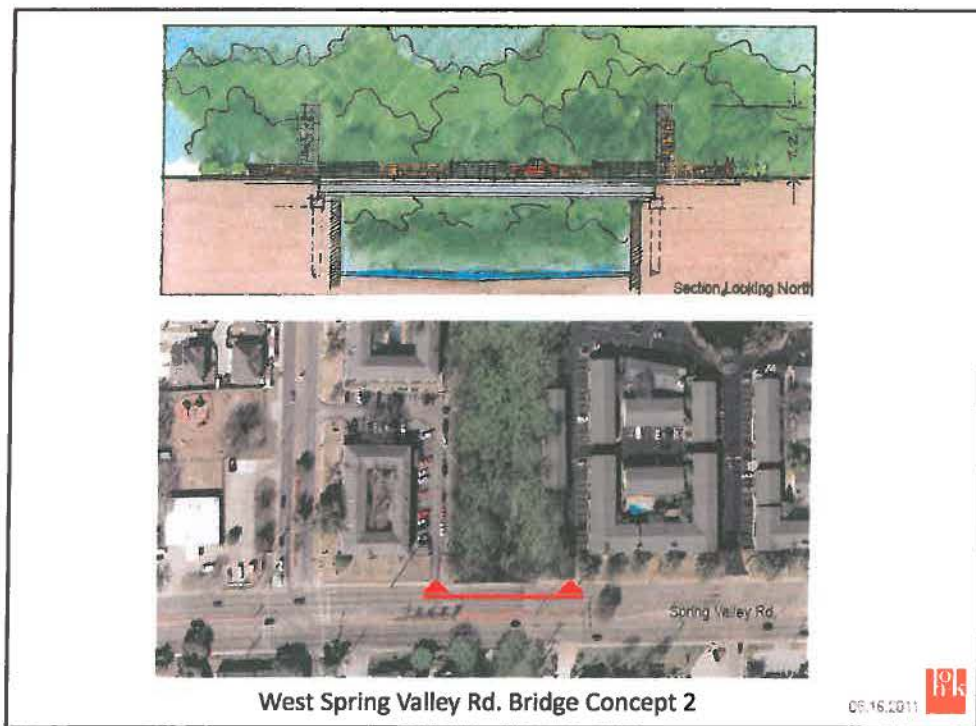
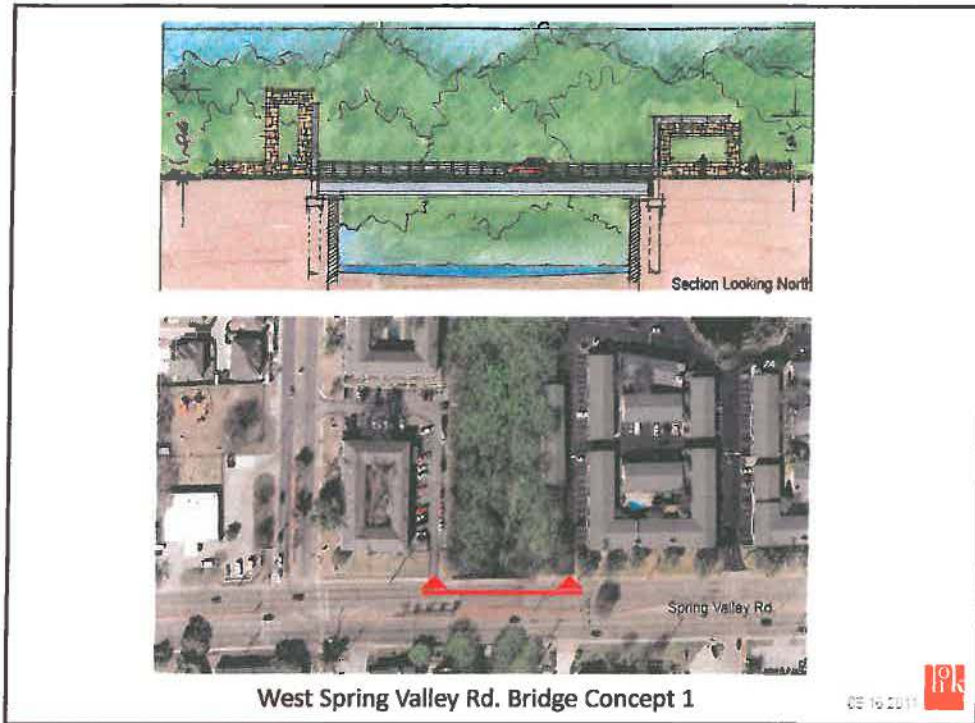
Neighborhood Vitality Enhancements
 Duck Creek, Mark Twain, N. College Park - Richardson, Texas

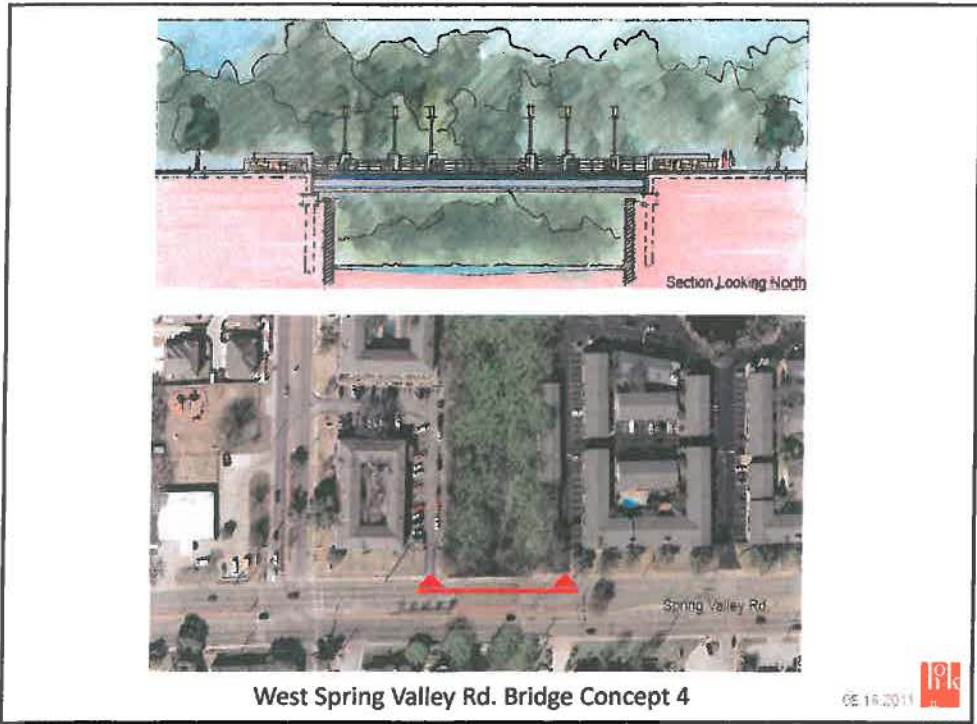
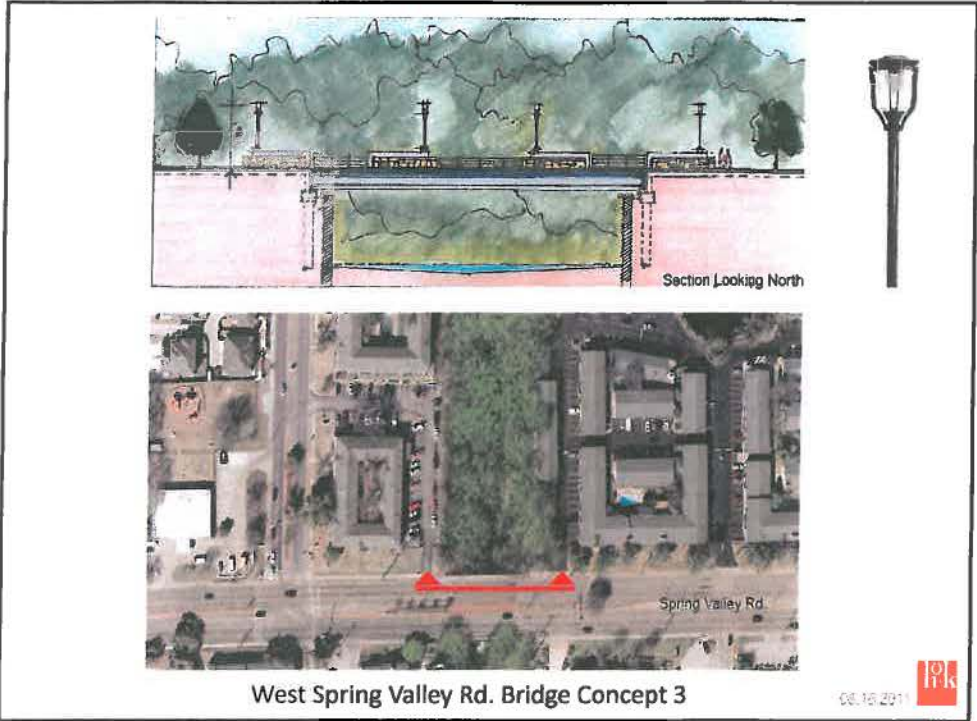
David T. Fettsch
 David T. Fettsch design, LLC

BRIDGE ENHANCEMENT PROJECTS

- W. Spring Valley Road
 - Cottonwood Branch
 - Hunt Branch





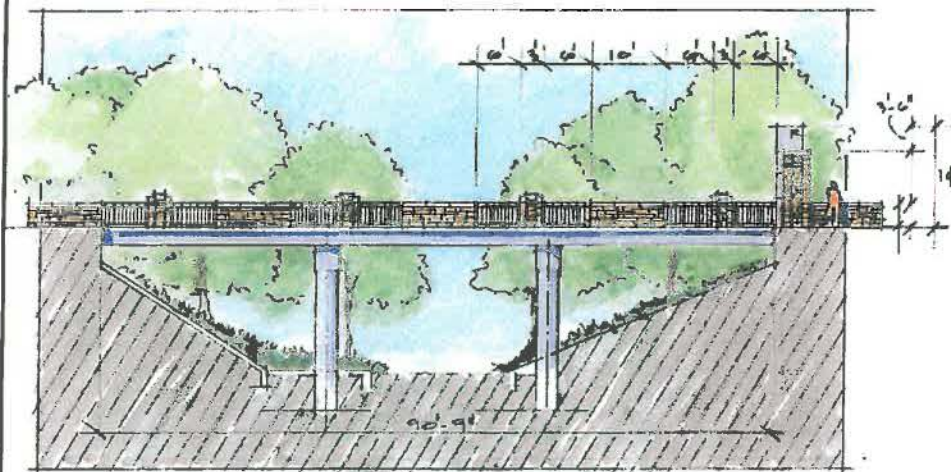


BRIDGE ENHANCEMENT PROJECTS

- Cottonwood Heights
 - Dumont @ Cottonwood Creek
 - Dumont @ Cottonwood Park
 - Dublin @ Waterfall Way
- Cottonwood Heights / Richardson Heights
 - Weatherred @ Blue Lake



DUMONT BRIDGE IMPROVEMENT



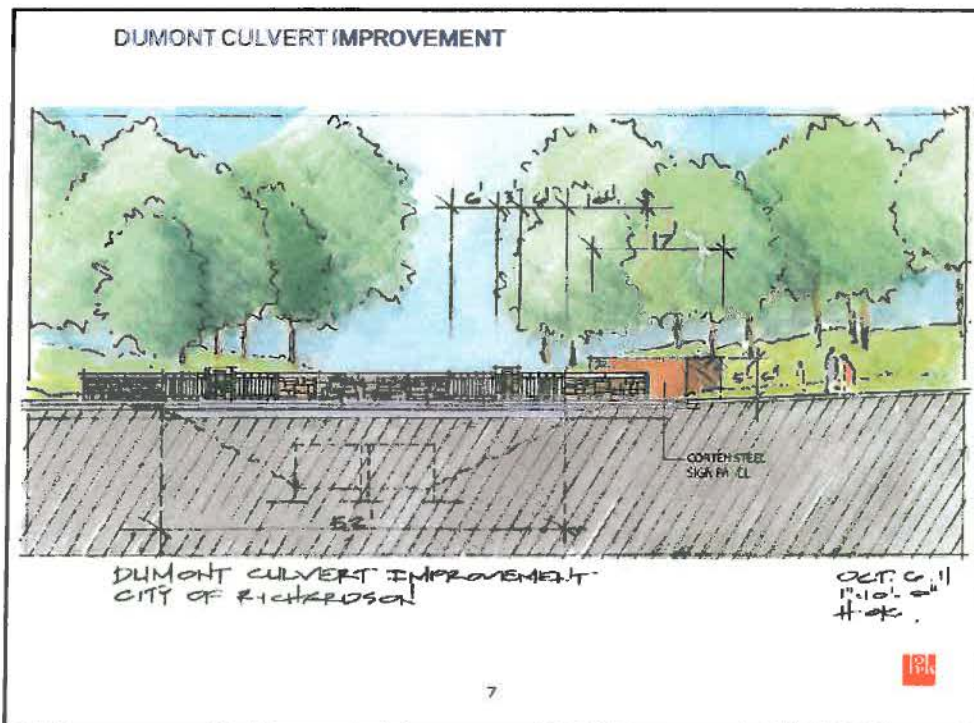
DUMONT BRIDGE IMPROVEMENT
CITY OF RICHARDSON

DATE: 6.11
11.10.11
H.K.

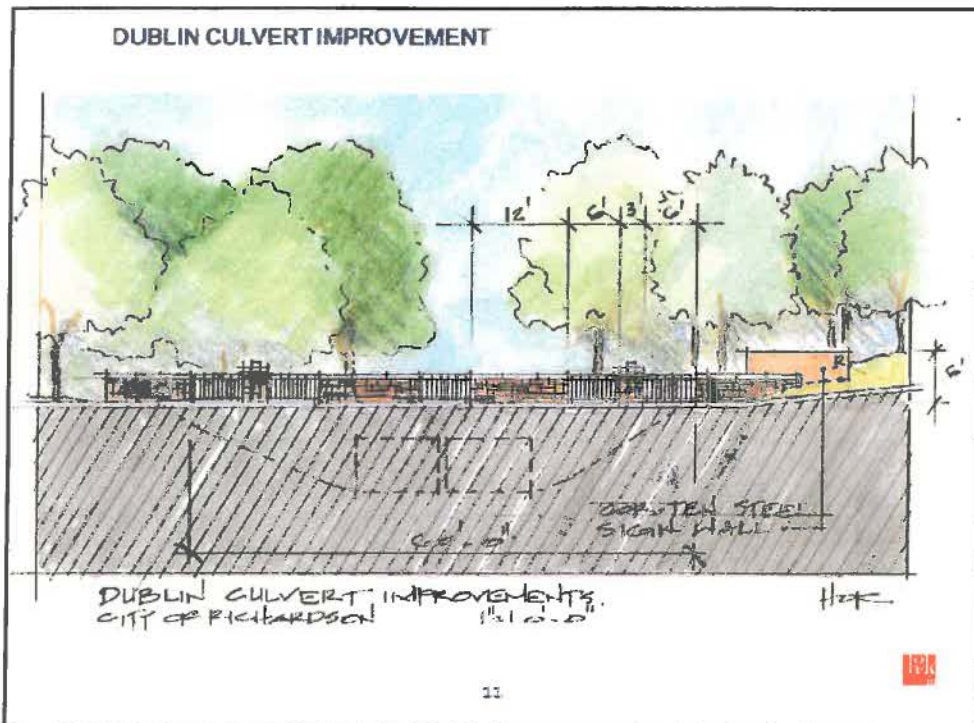
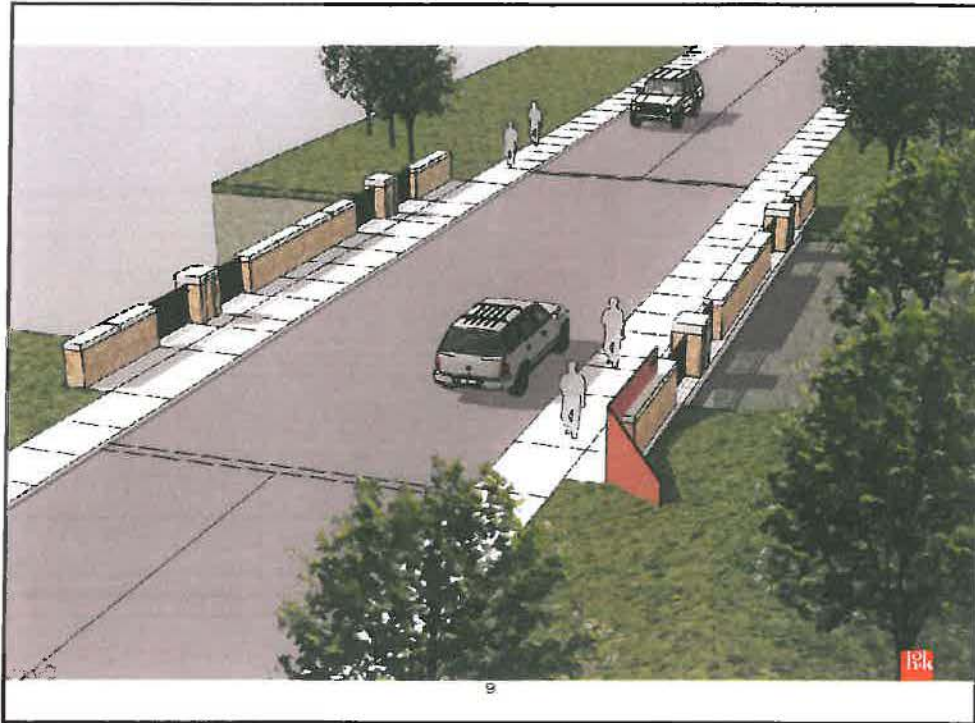




5



7





2ND ROUND OF PROJECTS

2ND ROUND OF PROJECTS

- College Park
 - Entry feature NE corner of Centennial & Bowser
- Town North Park
 - Entry feature SW corner of Spring Valley & Plano
- Woodhaven Townhouse Association
 - Entry feature Towne House Lane @ Club House

2ND ROUND OF PROJECTS

- Canyon Creek Bridges
 - Lookout near Canyon Creek Country Club
 - Prairie Creek just south of Fall Creek
 - Custer between Canyon Creek & Fall Creek

NEXT STEPS

- Finalize selection of consultants for second round of projects
- Schedule meetings with neighborhood committees
November
- Select projects for 3rd Round in the Spring of 2012
 - Subsequent to presenting design to HOAs in 2nd Round at neighborhood wide meeting